



# MOOMIN

CREATE AND DECORATE YOUR MOOMINHOUSE


ABOUT YOUR COLLECTION



**EASY ASSEMBLY**  
Step-by-step photos and instructions



**MOOMIN FIGURES**  
and their friends, as well as furniture and accessories



**HIGH-QUALITY PARTS**  
made from natural materials



**FOOD GIFTS + STICKERS**



**LEISURE AND HOBBIES GIFTS**



**COMFORT AND TIDYING GIFTS**

## UPGRADE TO A PREMIUM OFFER

**FOR JUST \$1 extra per issue\***



**BY UPGRADING TO THE PREMIUM OFFER, YOU WILL ALSO RECEIVE ALL THESE EXCLUSIVE FIGURES TO COMPLETE YOUR DIORAMA.**

PREMIUM OFFER INCLUDES FIGURES OF MR. HEMULEN, MYMOLE, FILLYJONK, THE HATTIFATTENERS, TOO-TICKY, SNORK, THE GROKE, STINKY, A BRIDGE, A WELL, AND A MAILBOX, AS WELL AS THE MAT.

\*See the full conditions on deagostini.com. If gifts become unavailable for any reason, they will be replaced by others of equal or greater value. Items may differ from the illustrations shown.

ISSN 2753-6602



9 772753 660008

# WELCOME TO THE BEAUTIFUL MOOMINHOUSE!

Everyone is welcome at the Moominhouse, the very embodiment of a home! Create this detailed and charming reproduction straight from Moominvalley, the magical universe created by **Tove Jansson**. In each issue, you'll find all the parts you need to build the rooms of this adorable house and bring together the Moomin family and their friends.

So, welcome to the Moominhouse!

“There is no house more magnificent than this!”

Moominpappa

Explore the world of the Moomintrolls in the pages of the magazine

In each issue, you'll find detailed instructions for assembling your Moominhouse. We've also got lots of charming stories from the magical world of the Moomintrolls.



AMAZING FIGURES  
The Moomin family and their friends!

## THE WORLD OF THE MOOMINS

Each issue of the magazine is divided into three parts. In addition to information on assembling the Moominhouse, the magazine also contains lots of information about the wonderful world of the Moomins.



### ASSEMBLING THE MOOMINHOUSE

Detailed assembly information is provided, but even if you are new to model-making, you don't have to worry.

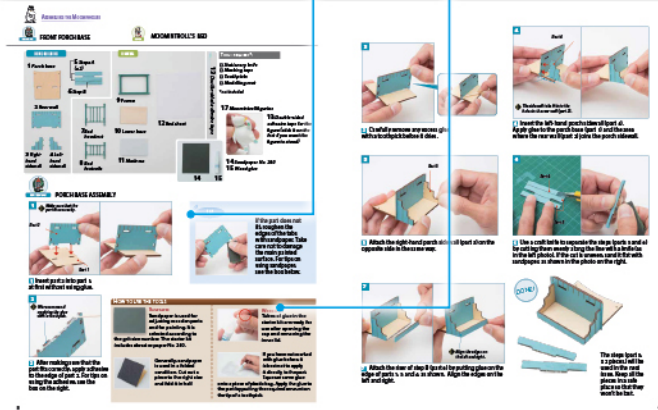


In this series, the parts are presented in three categories: parts of the house, pieces of furniture and household accessories. The character inside the circle shows who the item belongs to. If the item belongs to a character whose figure is in the series, their picture is placed in a red circle.

Tips and Tools explain the intricacies of assembly.

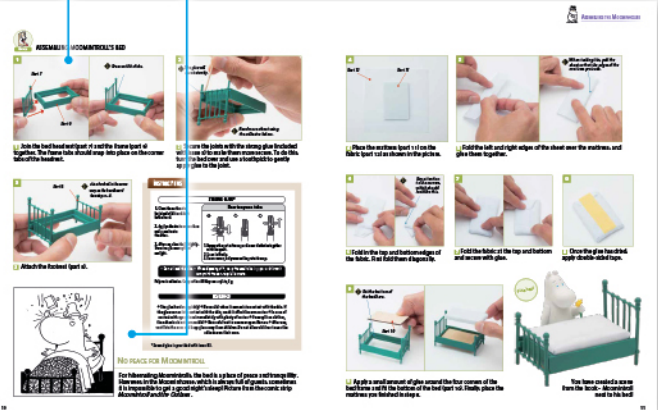
#### TIPS

#### TOOLS



Detailed step-by-step instructions with photos.

Scenes from a book or comic strip that feature the assembled furniture.

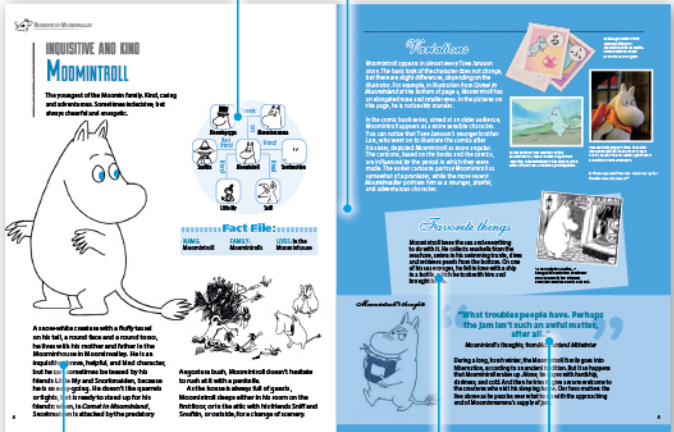


### RESIDENTS OF MOOMINVALLEY

Each issue tells the story of one of the inhabitants of Moominvalley.

Stories and family connections

The qualities and habits of each character.



A biography and description of each character.

The character's favorite things.

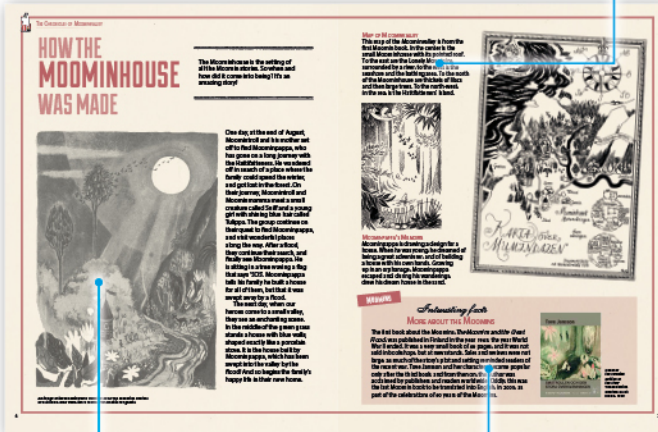
Quotes from books or comics by the character.



### THE CHRONICLES OF MOOMINVALLEY

Discover the many fascinating events and stories in the lives of the inhabitants of Moominvalley, illustrated with pictures from the original books and comics.

Stories about significant events in the lives of the characters, based on books and comics.



The illustrations, many by Tove Jansson herself, help readers better understand the magical world of Moominvalley.

Each issue highlights one of the works dedicated to the Moomins.



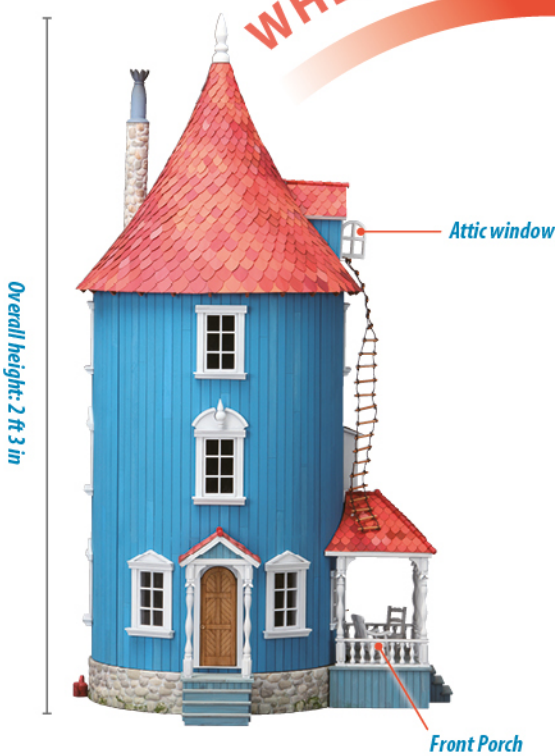
# TAKE A PEAK INSIDE THE MOOMINHOUSE!

Look at this charming house – tall and round, like a lighthouse, with a steep roof and many rooms to explore! This is the home of the Moomins, some of the world's most beloved characters. Their house is brought to life in this easy-to-build model, which has been thought out in the smallest detail. In every room, you can see the furniture and accessories, recreated exactly from the books by **Tove Jansson**.

## Entrance into the house

The side with the porch on the ground floor is the main entrance to the house. On this side, in addition to the rooms on each floor, there are also stairs and a landing on the second and third floors.

WHEN OPENED



Weight with furniture and utensils approx. 9 lbs

Maximum width including veranda: 1 ft 2 in

## PULL-OUT CELLAR



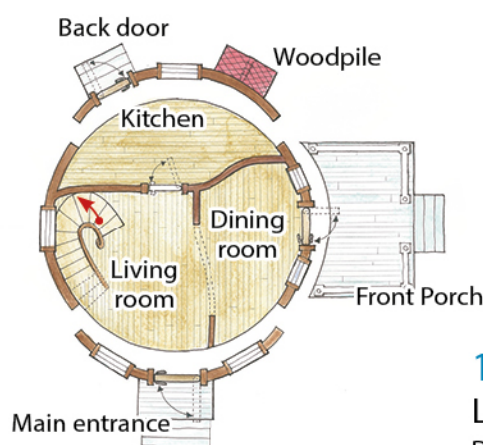
Part of the foundation of the house is a pull-out cellar. This is where the food supplies of the food-loving Moomintrolls are stored in abundance. The pull-out cellar has a watering can as its handle.

## From the back door

The woodpile and back door are on this side. In addition to the rooms of each floor, on this side we see a veranda and the pull-out cellar in the basement of the house.

## THE LAYOUT

Drawings by Kazuaki Murakami

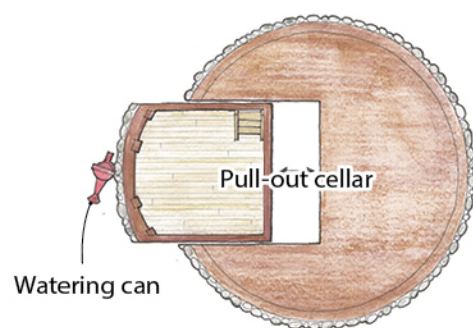


## THE FRONT PORCH

Located on the ground floor, on the outside of the house. The front porch is mentioned in books as a place where the inhabitants of the house eat, and drink coffee.

## 1ST FLOOR LIVING AND DINING ROOM

## BASEMENT CELLAR



## ATTIC

## 3RD FLOOR MOOMINPAPPA'S OFFICE

## BOOKSHELF

\* Books on the shelf not included in the series

## 2ND FLOOR MOOMINPAPPA AND MOOMINMAMMA'S BEDROOM

## SKYLIGHT

The skylight opens and closes. A rope ladder hangs from it, which Moomintroll uses to get out and back in.

## 3RD FLOOR BEDROOM FOR GUESTS

## ATTIC

## 2ND FLOOR BATHROOM

## 1ST FLOOR KITCHEN

## REMOVABLE ROOF AND WALLS!



The roof and two walls of the house can be removed, so you can admire not only the exterior of the Moominhouse, but also the interior, which has been thought out in the finest detail.



The house is beautiful on the inside as well as on the outside!

# THE CHARACTERS



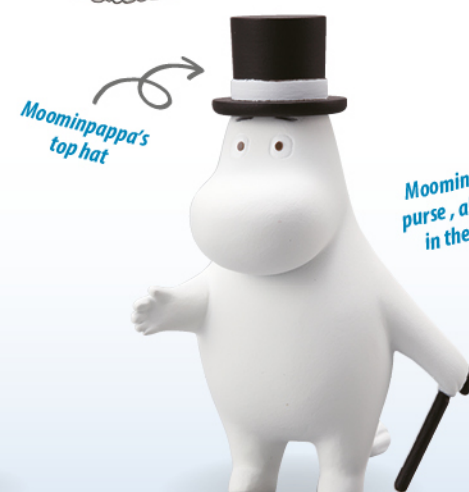
**№ 1 MOOMINTROLL**  
Moomintroll is young, slightly naive, inquisitive, and sociable. He lives with his father and mother in the Moominhouse.



**№ 2 SNUFKIN**  
A close friend of Moomintroll. A traveler who loves freedom, solitude, and music. Goes to warmer climes in winter, and spends spring and summer by the river in Moominvalley.



**№ 3 LITTLE MY**  
Little My is tiny but totally fearless. She says whatever comes into her head. She is taken in by the Moomin family and lives with them in the Moominhouse.



**№ 4 MOOMINPAPPA**  
Moomintroll's father. Designed and built the Moominhouse. Very inventive, writes books. He takes care of the house and family, but sometimes he is irresistibly attracted to adventure.



**№ 5 MOOMINMAMMA**  
Moominmamma is Moomintroll's mother. Kind and caring, she warmly welcomes all guests. She is a good cook, but can't stand cleaning!



**№ 6 SNORKMAIDEN**  
A friend of Moomintroll. Lives with her brother, but often visits the Moominhouse.



**№ 7 THE ANCESTOR**  
The Ancestor hid in the wardrobe at the Moominhouse... in the bathtub, and then... went to live behind the cooker. An ancestor of the Moomin family over 1,000 years old.



**№ 8 SNIFF**  
Moomintroll's friend. Easily scared and a bit greedy, but a generally likable character. Sometimes hibernates in the Moominhouse.